

NEAH

**Neah-Kah-Nie  
School District**

Integrated Guidance  
Annual Report

KAH

NIE



# Integrated Guidance



ODE is operationally integrating six<sup>^</sup> programs and district responsibilities:

- High School Success (HSS)\*
- Student Investment Account (SIA)\*
- Career and Technical Education - Perkins V (CTE)\*
- Continuous Improvement Planning (CIP)\*\*
- Every Day Matters (EDM)
- Early Indicator and Intervention Systems (EIS)\*
- <sup>^</sup>Early Literacy Success Grant (to be included in 25-27 IG Plan)

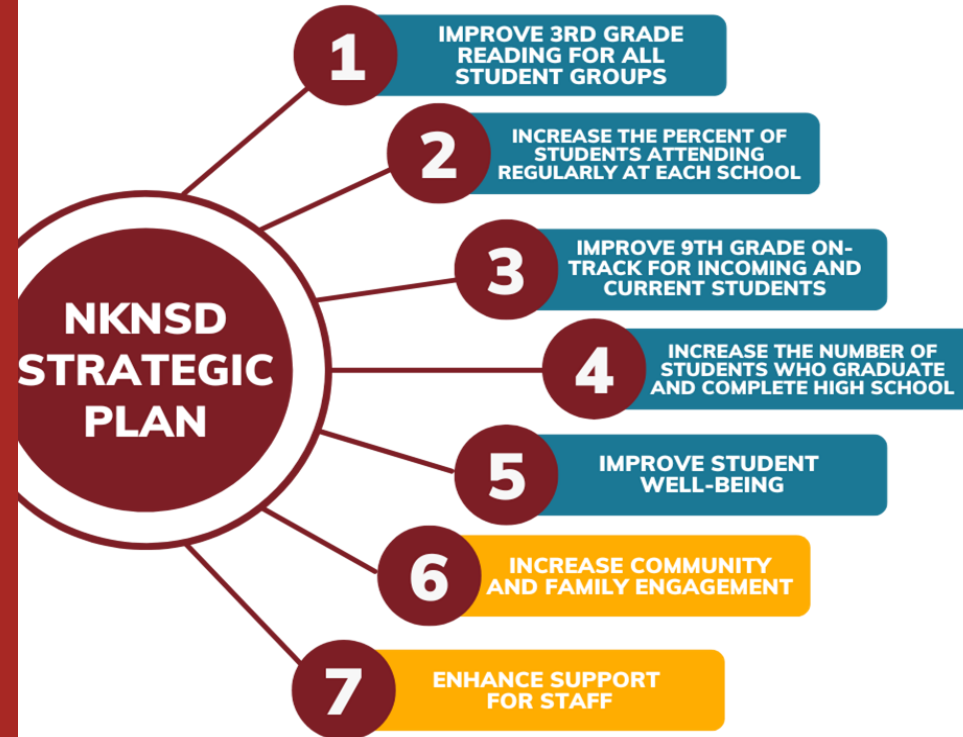
\*denotes funds NKN receives directly

\*\*denotes funds received through county consortium

# NKN IG Plan 23-25



- Current IG Plan created at the start of the current biennium.
- We are creating the new plan now to align with new strategic plan





# Measuring Success

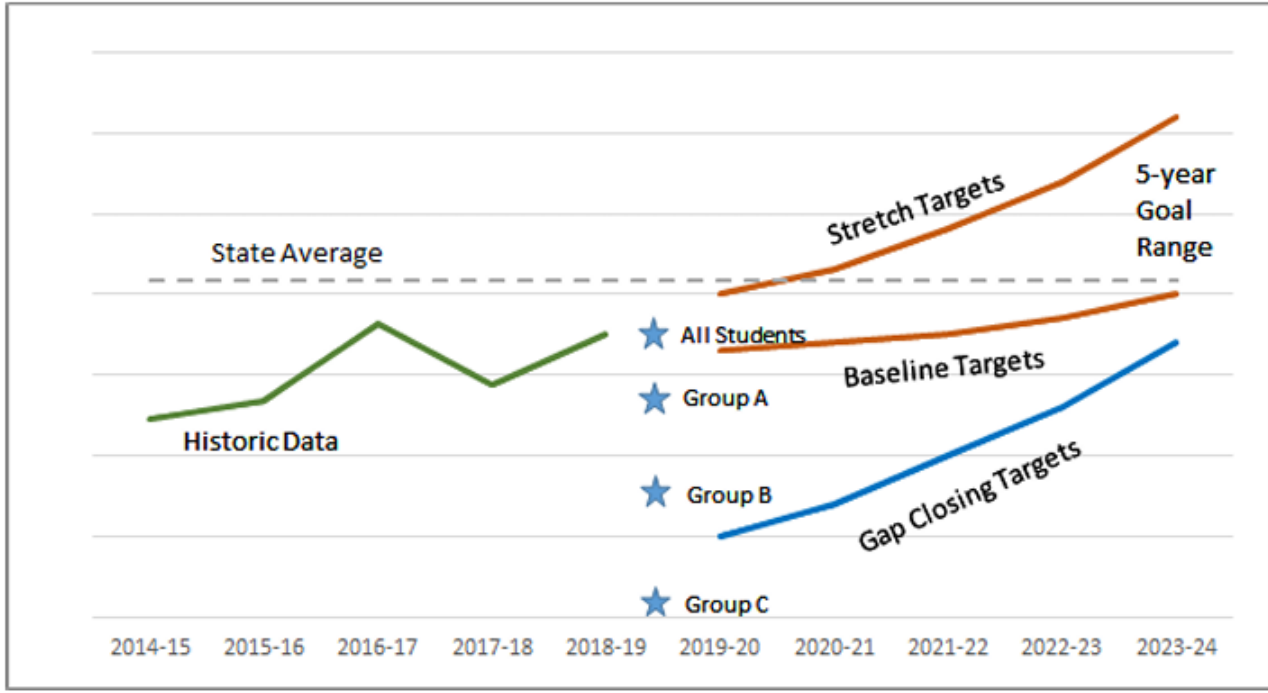


# Longitudinal Performance Growth Targets (LPGTs)

**The LPGTs set baseline and growth targets for student performance for the following metrics:**

- **3rd grade reading**
- **Regular attendance**
- **9th grade on track**
- **4 year graduation rates**
- **5 year completion rates**

# Longitudinal Performance Growth Targets



# Gap Closing Targets = Combined Focal Group

## Combined Focal Group includes:

- **Students Navigating Poverty (OAR as of Dec. 2022)**
- **Students Navigating Homelessness**
- **Students Navigating Foster Care**
- **Migrant Students**
- **Students with Disabilities**
- **Emerging Bilingual Students**
- **Recently Arrived**
- **Students with Experience of Incarceration or Detention**
- **American Indian/Alaska Native Students**
- **Black/ African American Students**
- **Hispanic/Latina/o/x Students**
- **Native Hawaiian /Pacific Islander Students**
- **Asian Students**
- **Multiracial Students**
- **Nonbinary Students**

# 4-year Graduation Rate for NKNSD: The percentage of students earning a regular or modified diploma within four years.



Four-Year Cohort Graduation Rate	Starting Point (5-year avg.)	2023-24 Target	2024-25 Target	2025-26 Target	2026-27 Target	2027-28 Target
Baseline Target: All Students	86.60%	87.02%	87.44%	87.86%	88.28%	89.00%
Stretch Target: All Students		87.68%	88.76%	89.84%	90.92%	92.00%
Gap Closing Target: All Focal Group Students	79.10%	80.10%	81.10%	82.00%	83.00%	84.00%

## Data 23-24

Baseline Target: All Students	86.08%*
-------------------------------	---------

**Did not meet goal.**  
**\*Data calculated internally.**





# 5-year Completion Rate for NKNSD: The percentage of students earning a regular, modified, extended, or a GED within five years.

Five-Year Cohort Completion	Starting Point (5-year avg.)	2023-24 Target	2024-25 Target	2025-26 Target	2026-27 Target	2027-28 Target
Baseline Target: All Students	91.40%	91.40%	91.50%	91.50%	91.60%	92.00%
Stretch Target: All Students		92.12%	92.84%	93.56%	94.28%	95.00%
Gap Closing Target: All Focal Group Students	86.30%	87.00%	87.70%	88.40%	89.10%	89.80%

## Data 23-24

Baseline Target: All Students	79.55%*
-------------------------------	---------

**Did not meet goal.**  
**\*Data calculated internally.**



**9th Grade On-Track Rate for NKNSD: The percentage of students earning at least one-quarter of their graduation credits by the end of the summer following their 9th grade year.**

<b>9th Grade On-Track</b>	<b>Starting Point (5-year avg.)</b>	<b>2023-24 Target</b>	<b>2024-25 Target</b>	<b>2025-26 Target</b>	<b>2026-27 Target</b>	<b>2027-28 Target</b>
Baseline Target: All Students	78.20%	79.96%	81.72%	83.48%	85.24%	87.00%
Stretch Target: All Students		81.56%	84.92%	88.28%	91.64%	95.00%
Gap Closing Target: All Focal Group Students	71.50%	74.00%	76.50%	79.00%	81.50%	84.00%

**Data 23-24**

Baseline Target: All Students	82.0%
-------------------------------	-------

**Surpassed goal.  
Data from ODE.**

# 3rd Grade ELA Rate for NKNSD: The percentage of students proficient on state English Language Arts assessments in 3rd grade.



3rd Grade ELA Proficiency	Starting Point (5-year avg.)	2023-24 Target	2024-25 Target	2025-26 Target	2026-27 Target	2027-28 Target
Baseline Target: All Students	45.96%	48%	50%	52%	54%	56.00%
Stretch Target: All Students		49.40%	52.80%	56.20%	59.60%	63.00%
Gap Closing Target: All Focal Group Students	33.82%	37.20%	40.60%	44.00%	47.40%	50.80%

## Data 23-24

Baseline Target: All Students	57.7%
-------------------------------	-------

**Surpassed goal.  
Data from ODE.**

# Regular Attender Rate for NKNSD: The percentage of students attending more than 90 percent of their enrolled school days.



Regular Attenders	Starting Point (21-22 actual)	2023-24 Target	2024-25 Target	2025-26 Target	2026-27 Target	2027-28 Target
Baseline Target: All Students	50.15%	56.00%	59.00%	62.00%	65.00%	68.00%
Stretch Target: All Students		58.00%	63.00%	68.00%	73.00%	78.00%
Gap Closing Target: All Focal Group Students	36.06%	54.00%	57.25%	60.50%	63.75%	67.00%

## Data 23-24

Baseline Target: All Students	66.2%
-------------------------------	-------

**Surpassed goal.  
Data from ODE.**

# Annual Reporting Questions



### **Question 1:**

**"As you review your progress markers/overall reflection responses and reflect on plan implementation, how do you see your progress contributing to the Outcomes and Strategies in your plan and your Longitudinal Performance Growth Targets (LPGT)/Local Optional Metrics (LOM)?"**

**Discuss at least one Outcome where you have seen progress in implementation."**

- **"We have a great deal of success from IG strategies. Our literacy scores have improved and mental health counselors report that students are taking advantage of the mental health resources available to them. The Early literacy grant helped send our teachers to LETRS training and be trained in the Science of Reading. SIA funds pay for the salaries of our family resource coordinators and mental health counselors. Tutoring has also contributed to our success.**
- **Other things IG has helped fund:**
  - **New curriculum, expanded reading time, PE, music, LatinX family night, gear up events, and other community engagement activities."**

## Question 2:

**"Where have you experienced barriers, challenges, or impediments to progress toward your Outcomes and Strategies in your plan that you could use support with?"**

**Discuss at least one Outcome where you have seen challenges or barriers to implementation."**

- **"Attendance did improve, but we can always be better. We are auditing our systems to see if reporting is accurate in Synergy. We will also use Synergy "nudge" letters to inform families of their child's absence totals.**
- **One outcome of "increase community and family engagement," language barriers arose for some of our students and families. Translation services will be a priority in the next round of integrated guidance."**



**Questions?**

